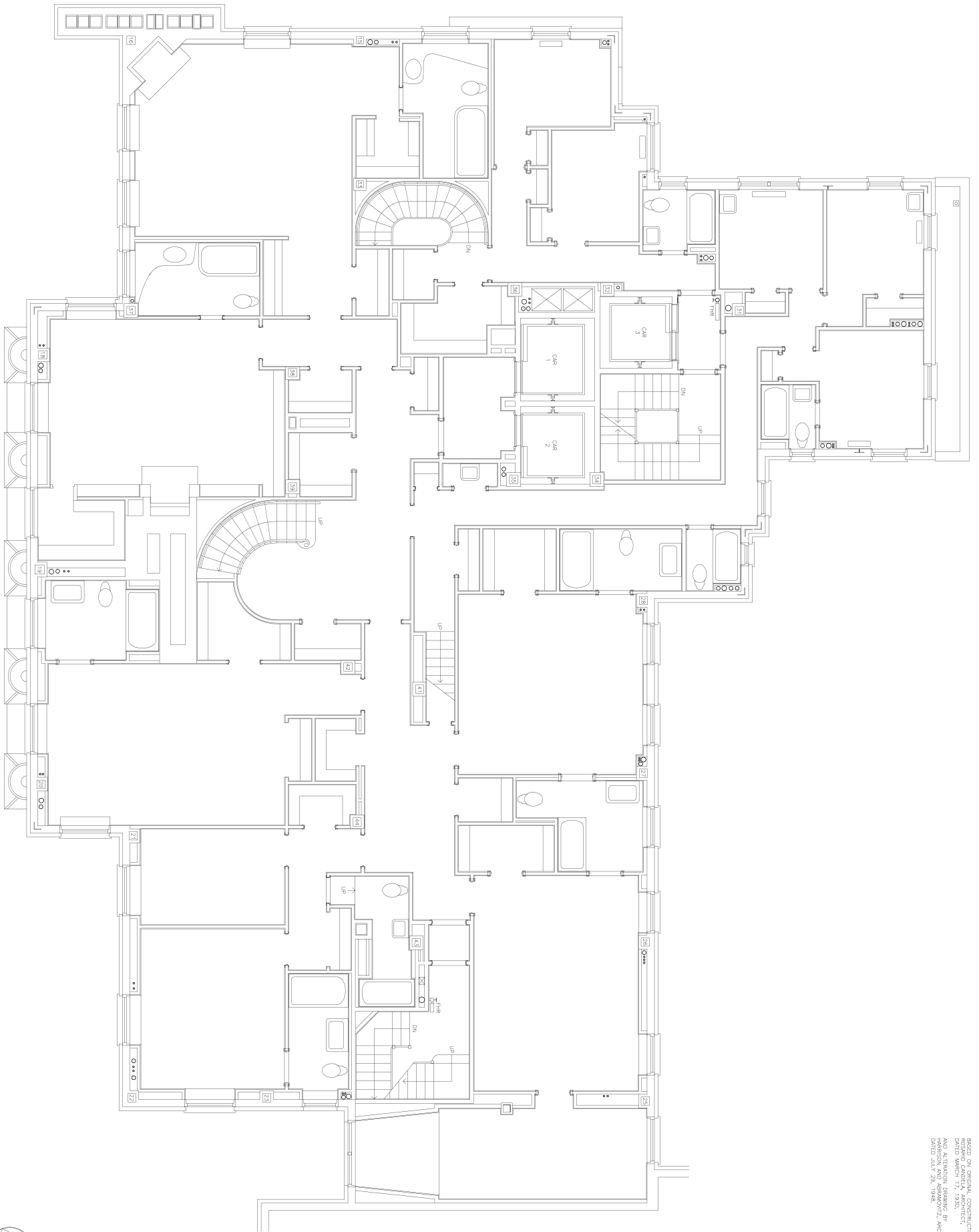


14TH FLOOR PLAN



DECEMBER 17 1990



DMC: RC-EXPL-14

EXISTING CONDITIONS

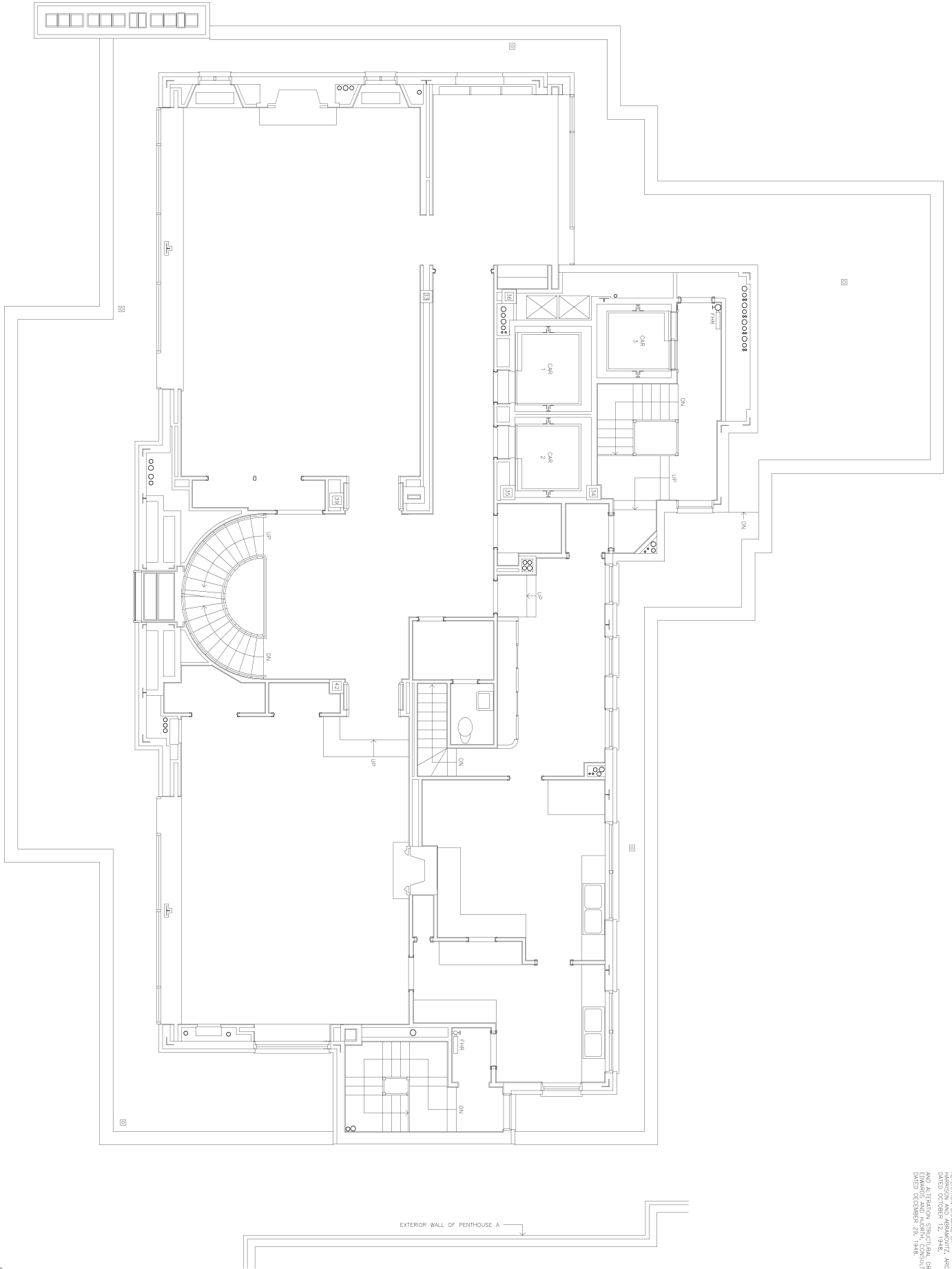
PROPOSED ELEVATOR

PENTHOUSE B 834 FIFTH AVENUE
NEW YORK NEW YORK

JOHN YOUNG ARCHITECT
251 WEST 89TH STREET
NEW YORK NEW YORK

BASED ON ORIGINAL CONSTRUCTION DRAWING BY
JOHN YOUNG ARCHITECT,
1970
REVISIONS BY
AND ALTERATION DRAWING BY
HARRISON AND ABRAMOWITZ ARCHITECTS,
DAVID JILL, 23, 1980.

COPYRIGHT
JOHN YOUNG
1990



15TH FLOOR PLAN

BASED ON ORIGINAL CONSTRUCTION DRAWING BY JOHN YOUNG ARCHITECT, 1948.
 MODIFIED BY JOHN YOUNG ARCHITECT, 1990.
 ALTERNATE DRAWING BY HARRISON AND ARMSTRONG ARCHITECTS, 1990.
 DATED OCTOBER 12, 1990. SPANS BY EDWARD AND BLOTH CONSULTING ENGINEERS, 1948.
 DATED DECEMBER 29, 1948.



EXISTING CONDITIONS

PROPOSED ELEVATOR

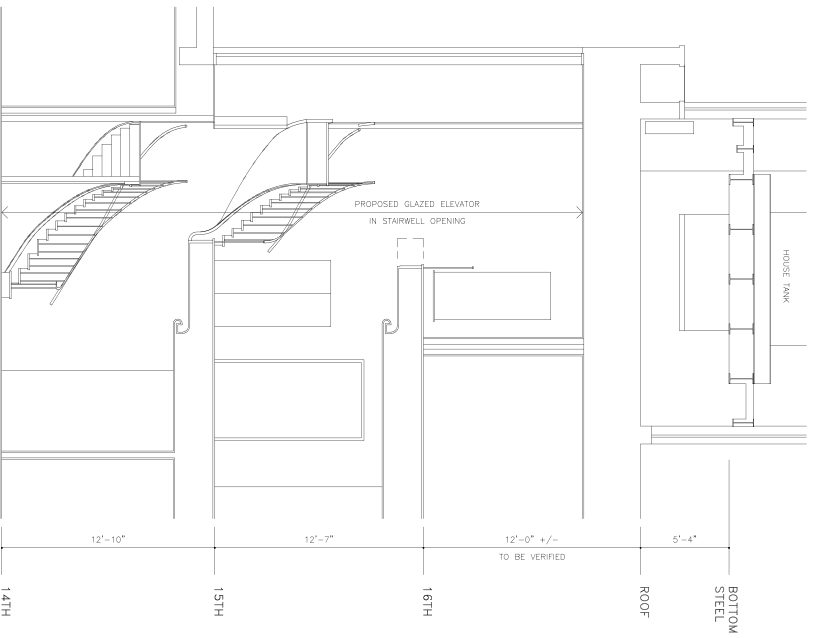
JOHN YOUNG ARCHITECT
 251 WEST 89TH STREET
 NEW YORK NEW YORK

COPYRIGHT
 JOHN YOUNG
 1990

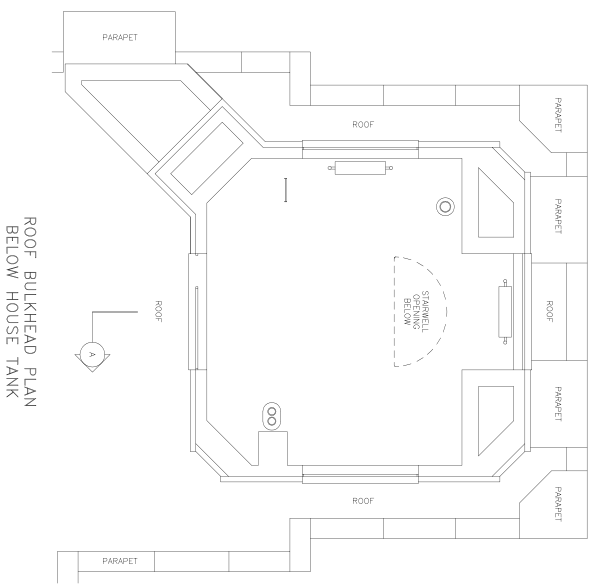


PENTHOUSE B 834 FIFTH AVENUE
 NEW YORK NEW YORK

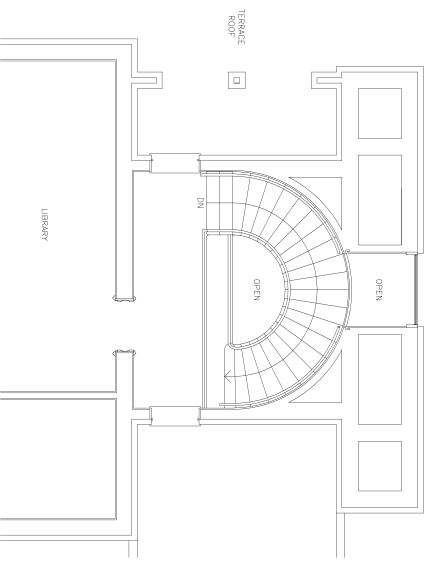
DMC: RC-EXP-15
 DECEMBER 17 1990



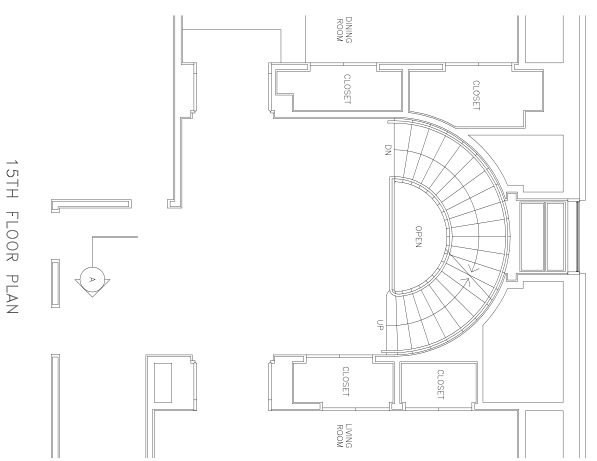
SECTION A-A LOOKING NORTH



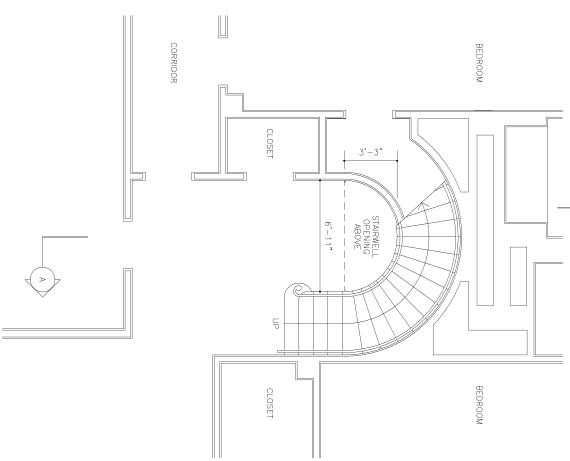
ROOF BULKHEAD PLAN BELOW HOUSE TANK



16TH FLOOR PLAN



15TH FLOOR PLAN



14TH FLOOR PLAN

PROPOSED ELEVATOR

PENTHOUSE B 834 FIFTH AVENUE
NEW YORK NEW YORK



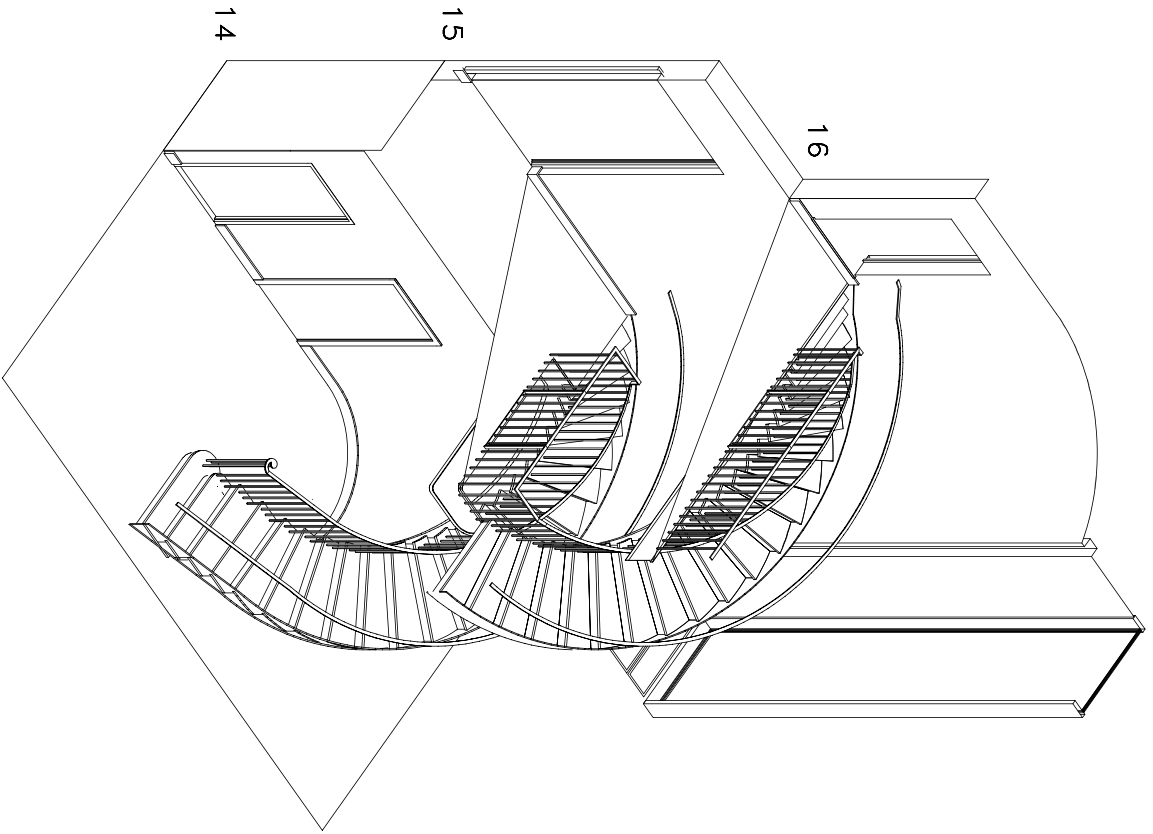
JOHN YOUNG ARCHITECT
251 WEST 89TH STREET
NEW YORK NEW YORK



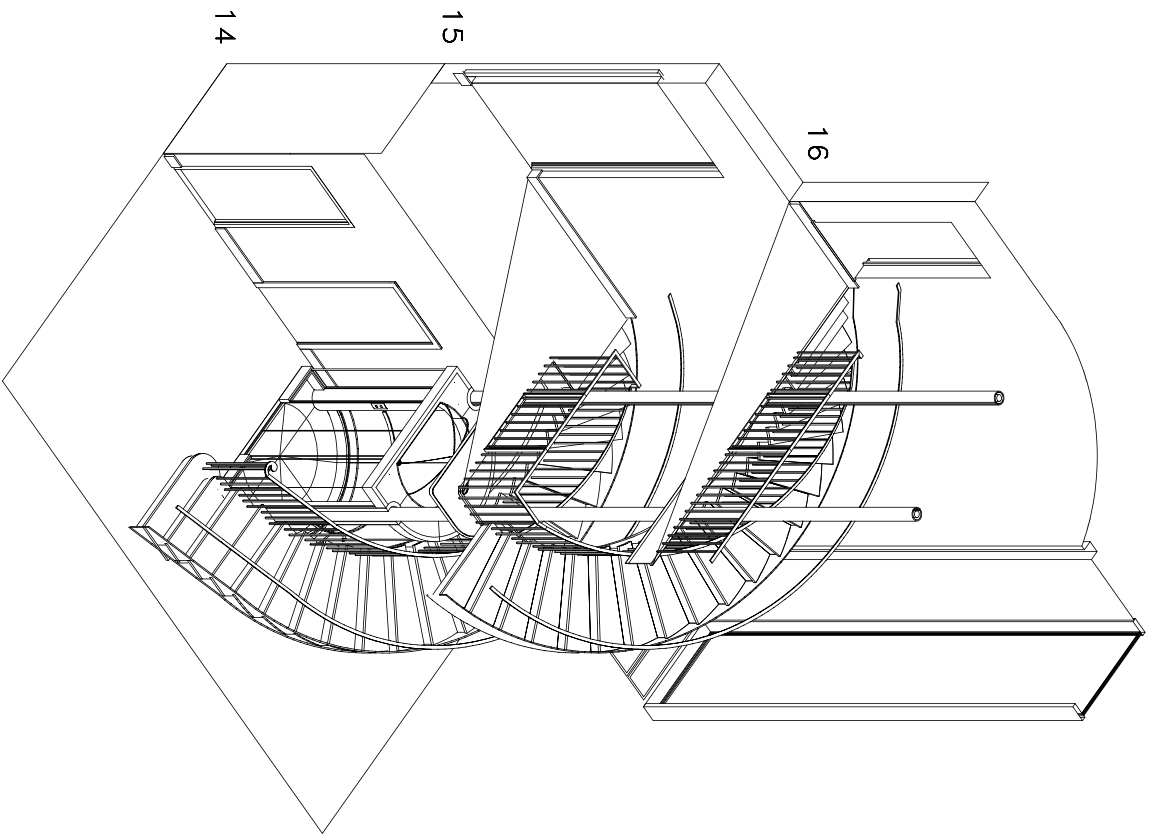
EXISTING CONDITIONS



DMC-RK-00EX-01
OCTOBER 6 1990



EXISTING



NEW ELEVATOR